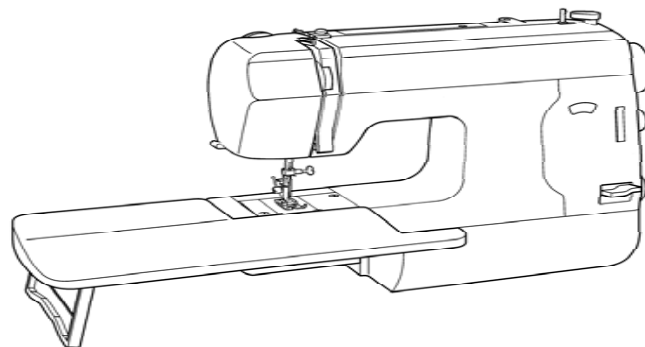


REFER TO IMPORTANT NOTICE BELOW

# PARTS LIST FOR Model 140Q

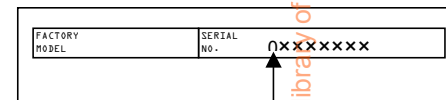


# SINGER

### IMPORTANT:

WHEN ORDERING THE PARTS  
ALWAYS CHECK THE SERIAL  
NUMBER OF THE MACHINE.

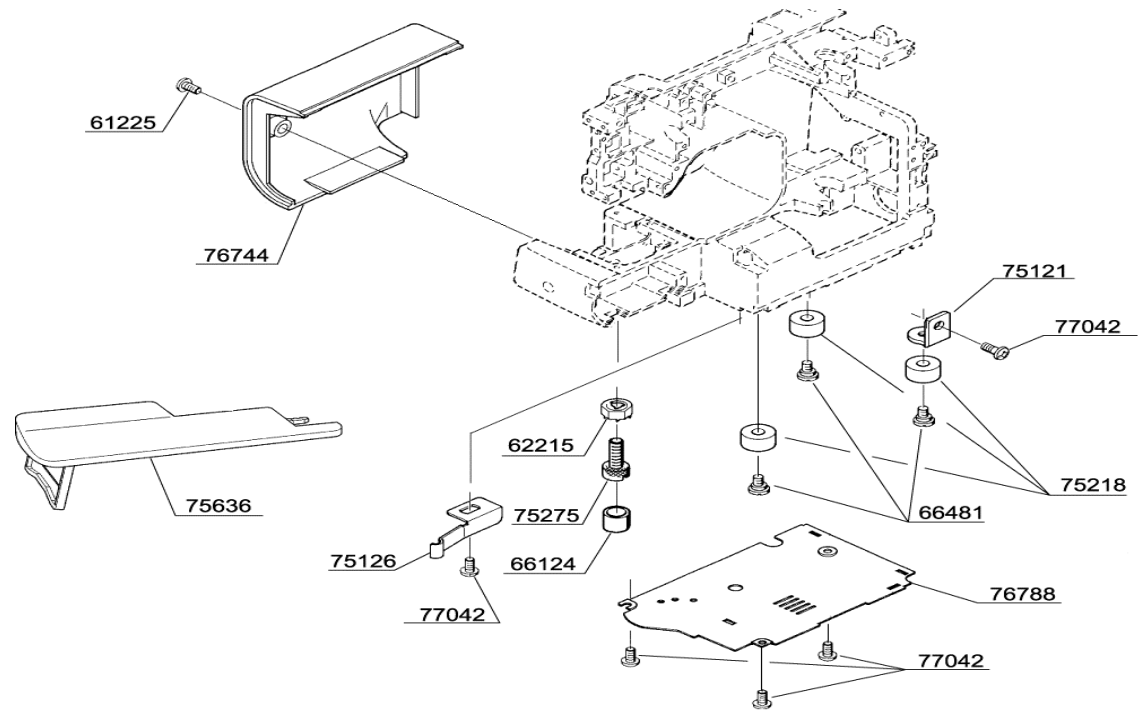
FIRST DIGIT OF THE SERIAL  
NUMBER MUST MATCH WITH  
THE LAST DIGIT OF THE FACTORY  
MODEL ABOVE.



FIRST DIGIT

From the library of: Diaroditee.com

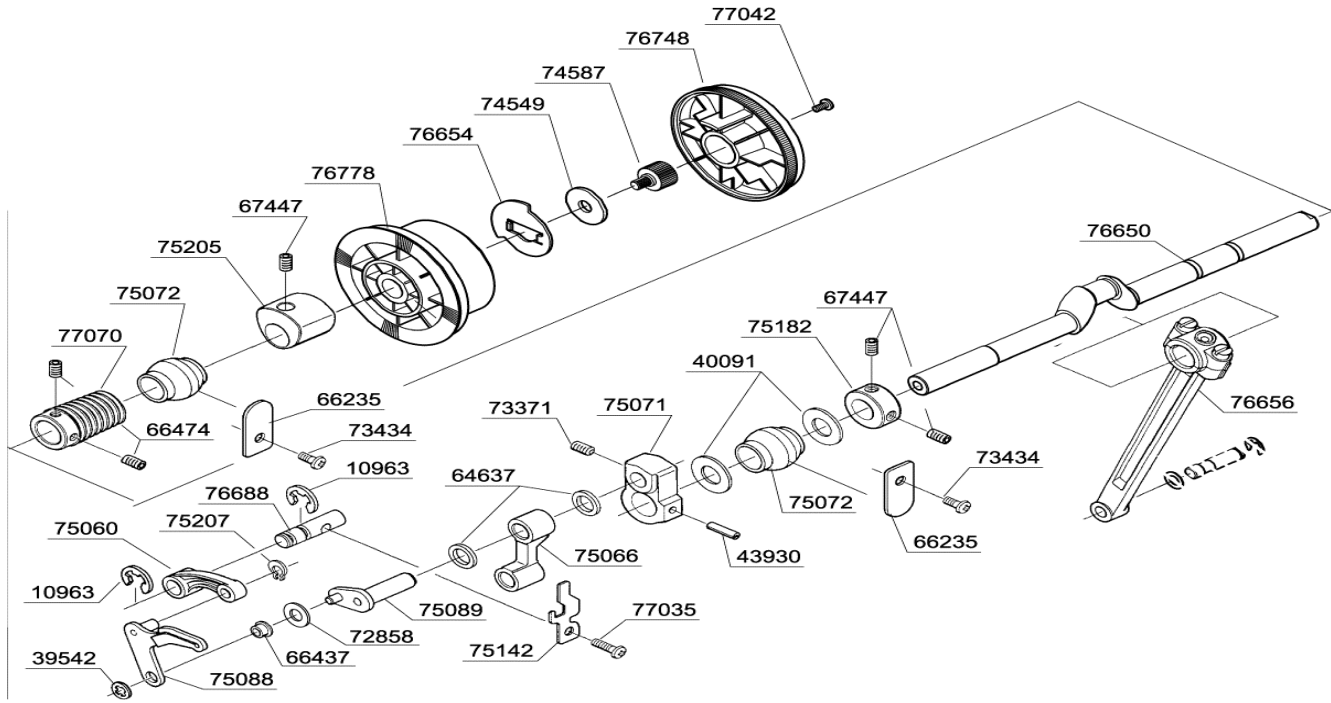
BUYER'S MODEL NO.	140Q	SECTION	PAGE	REVISION	REMARKS	PART NO.	DESCRIPTION
BUYER'S MODEL NAME		-	1			61225	M4 PHILLIPS SCREW
FACTORY MODEL	CA32360					62215	M4 TORQUE NUT
ORIGINAL ISSUE	APRIL 2003	SERIAL NO.				66124	RUBBER FOOT



61225	M4 PHILLIPS SCREW
62215	M4 TORQUE NUT
66124	RUBBER FOOT
66481	M4 STUD SCREW
75121	PLATE
75126	LEAF SPRING
75218	RUBBER CUSHION
75275	M4 STUD SCREW
75636	EXTENSION TABLE
76744	COVER
76788	BED COVER
77042	M4 PHILLIPS SCREW

From the library of: Diamond Needle Corp

BUYER'S MODEL NO.	140Q	SECTION	PAGE	REVISION	REMARKS
BUYER'S MODEL NAME		-	<b>2</b>		
FACTORY MODEL	CA32360				
ORIGINAL ISSUE	APRIL 2003	SERIAL NO.			



PART NO.	DESCRIPTION
10963	E6 CLIP-ON-WASHER
39542	CLIP-ON-WASHER
40091	THRUST WASHER
43930	SPRING PIN
64637	THRUST WASHER
66235	SECURING PLATE
66437	BUSH
66474	M5 SCREW
67447	M5 SCREW
72858	WASHER
73371	M6 SCREW
73434	M4 PHILLIPS SCREW
74549	WASHER
74587	M6 STUD SCREW
75060	TAKE-UP LEVER CRANK
75066	NEEDLE BAR CRANK
75071	BALANCE CAM
75072	BALL BUSHING
75088	TAKE-UP LEVER
75089	CRANK SHAFT
75142	CORD GUIDE
75182	COLLAR
75205	FEED REGULATING CAM
75207	CS-CLIP
76650	MAIN SHAFT
76654	WASHER
76656	CONNECTING ROD
76688	SHAFT
76748	HAND WHEEL
76778	BELT PULLEY
77035	M4 PHILLIPS SCREW
77042	M4 PHILLIPS SCREW
77070	SPIRAL GEAR

From the library of: Diamond Needle Corp

BUYER'S MODEL NO.	140Q	SECTION	PAGE	REVISION	REMARKS	PART NO.	DESCRIPTION
BUYER'S MODEL NAME		-	<b>3</b>			8058	NEEDLE CLAMP SCREW
FACTORY MODEL	CA32360					8400	E5 CLIP-ON-WASHER
ORIGINAL ISSUE	APRIL, 2003	SERIAL NO.				10963	E6 CLIP-ON-WASHER
						26934	#8 SCREW
						28917	#8 SCREW
						39542	CS-6 CLIP-ON-WASHER
						58727	NEEDLE BAR
						66005	M2 PHILLIPS SCREW
						66052	M4 SCREW
						66725	M4 SCREW
						67232	NEEDLE
						67268	ECCENTRIC PIN
						68343	PIN
						74050	EXTENSION SPRING
						75022	THREAD GUIDE
						75024	STOPPER
						75025	GUIDE BLOCK
						75027	COMPRESSION SPRING
						75079	NEEDLE BAR SUPPORT
						75112	LATCH PLATE
						75184	M4 COUNTERSUNK HEAD SCREW
						75237	SHAFT
						76682	TORSION SPRING
76683	SHAFT						
77037	NEEDLE BAR CLAMP						
77421	THREADER ASSEMBLY						
80003	NEEDLE CLAMP SET						

From the library of: Diamond Needle Corp

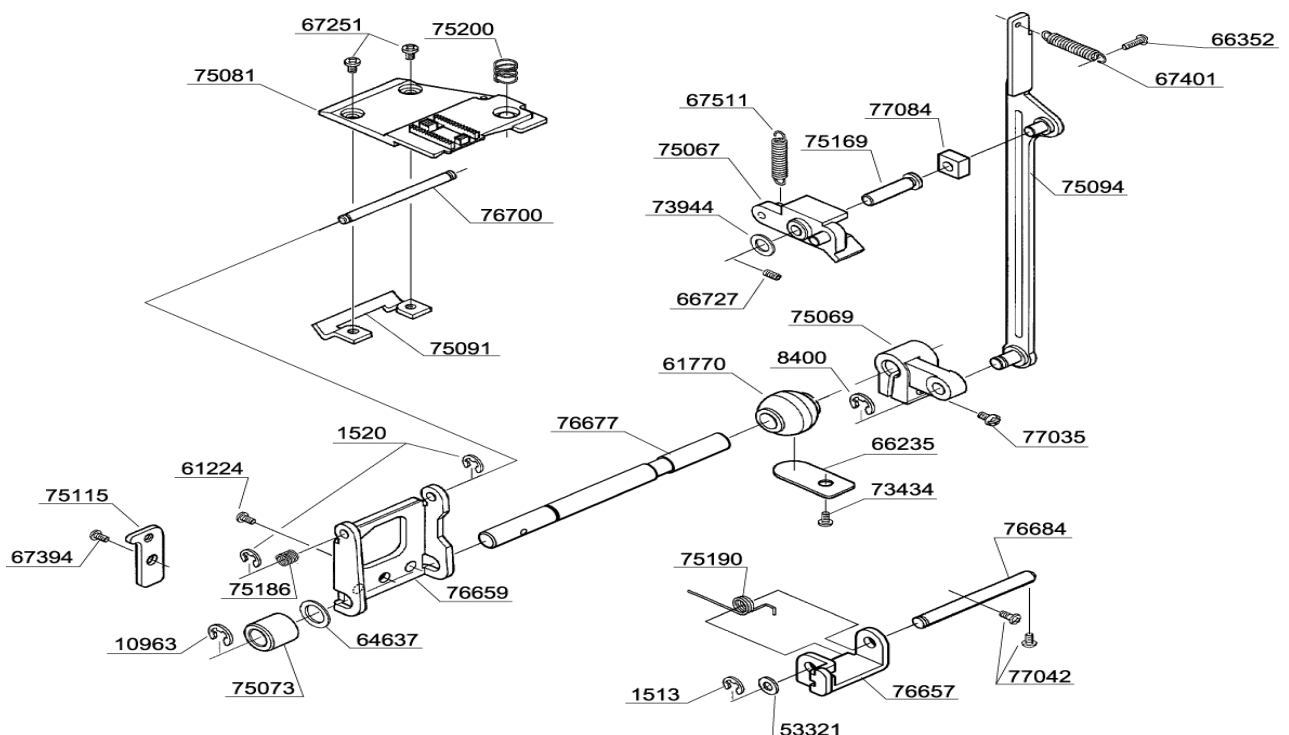
BUYER'S MODEL NO.	140Q	SECTION	PAGE	REVISION	REMARKS	PART NO.	DESCRIPTION
BUYER'S MODEL NAME		-	4			1513	E4 CLIP-ON-WASHER
FACTORY MODEL	CA32360					32316	WASHER
ORIGINAL ISSUE	APRIL 2003	SERIAL NO.				35818	WASHER
						37515	WASHER
						44267	SPRING WASHER
						44894	WASHER
						63278	PRESSER BAR
						63524	M3 BOLT
						66725	M4 SCREW
						66727	M4 SCREW
						68299	#7 SCREW FOR SHANK
						72266	STUD SCREW
						72326	WASHER
						75106	PRESSER BAR GUIDE
						75107	BRACKET A
						75108	BRACKET B
						75110	GUIDE PLATE
						75111	PRESSER BAR GUIDE BLOCK
						75161	SHAFT
						75191	COMPRESSION SPRING
						75233	LOCKER
						75235	LEAF SPRING
						75238	ECCENTRIC PIN
						75239	M4 STUD SCREW
						75359	STOPPER
						75606	PRESSER CONTROL DIAL
						77042	M4 PHILLIPS SCREW
						77043	FELT
77045	ZIGZAG PRESSER FOOT						
77068	SHANK						
77579	STRAIGHT STITCH LOCK LEVER						

From the library of: Diamond Needle Corp

BUYER'S MODEL NO.	140Q	SECTION	PAGE	REVISION	REMARKS	PART NO.	DESCRIPTION
BUYER'S MODEL NAME		-	<b>5</b>			8400	E5 CLIP-ON-WASHER
FACTORY MODEL	CA32360					32316	WASHER
ORIGINAL ISSUE	APRIL 2003	SERIAL NO.				43390	THRUST WASHER
						47910	BOBBIN CASE
						61770	BALL BUSHING
						64637	THRUST WASHER
						66474	M5 SCREW
						66725	M4 SCREW
						66727	M4 SCREW
						67411	SPIRAL GEAR
						67412	COLLAR
						67444	COLLAR
						67447	M5 SCREW
						73434	M4 PHILLIPS SCREW
						73973	M4 BOLT
						74097	SHUTTLE HOOK
						75074	BUSHING
						75076	FEED-DOG LIFTING CAM
						75113	SECURING PLATE A
						75114	SECURING PLATE B
						75204	BEVEL GEAR
						75241	SHUTTLE DRIVER
						76281	BOBBIN
76668	LOWER SHAFT ROCKER						
76681	HEADED PIN						
76687	SHUTTLE RACE ASSEMBLY						
76699	LOWER SHAFT						

From the library of: Diamond Needle Corp

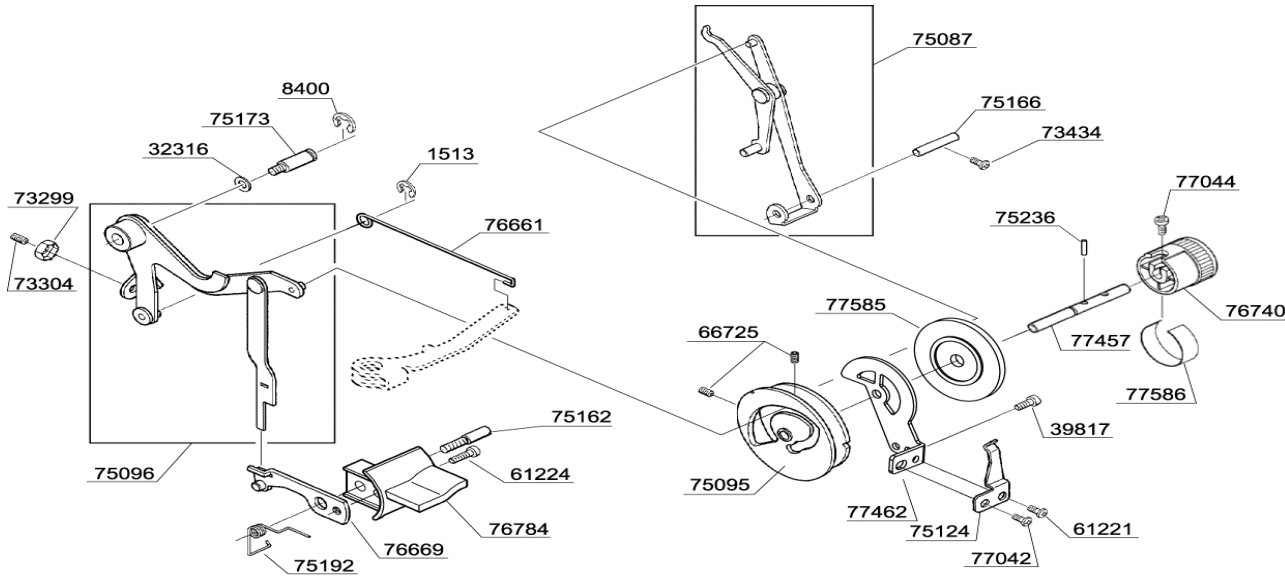
BUYER'S MODEL NO.	140Q	SECTION	PAGE	REVISION	REMARKS	PART NO.	DESCRIPTION
BUYER'S MODEL NAME		-	<b>6</b>			1513	E4 CLIP-ON-WASHER
FACTORY MODEL	CA32360					1520	E3 CLIP-ON-WASHER
ORIGINAL ISSUE	APRIL 2003	SERIAL NO.				8400	E5 CLIP-ON-WASHER
						10963	E6 CLIP-ON-WASHER
						53321	THRUST WASHER
						61224	M4 PHILLIPS SCREW
						61770	BALL BUSHING
						64637	THRUST WASHER
						66235	SECURING PLATE
						66352	M4 PHILLIPS SCREW
						66727	M4 SCREW
						67251	M3.5 PHILLIPS SCREW
						67394	M5 PHILLIPS SCREW
						67401	EXTENSION SPRING
						67511	EXTENSION SPRING
						73434	M4 PHILLIPS SCREW
						73944	THRUST WASHER
						75067	FEED REGULATOR
						75069	FEED REGULATING SHAFT ROCKER
						75073	BUSHING
						75081	FEED-DOG
						75091	SECURING PLATE
						75094	FEED REGULATING ROD
						75115	SECURING PLATE C
						75169	HEADED PIN
						75186	COMPRESSION SPRING
						75190	TORSION SPRING
						75200	COMPRESSION SPRING
						76657	FEED-DOG LIFTING ARM BRACKET
						76659	FEED REGULATING BRACKET
						76677	FEED REGULATING SHAFT
						76684	SHAFT
						76700	SHAFT
						77035	M4 PHILIPS SCREW
						77042	M4 PHILLIPS SCREW
						77084	SLIDE BLOCK



From the library of: Diamond Needle Corp

BUYER'S MODEL NO.	140Q	SECTION	PAGE	REVISION	REMARKS
BUYER'S MODEL NAME		-	7		
FACTORY MODEL	CA32360				
ORIGINAL ISSUE	APRIL, 2003	SERIAL NO.			

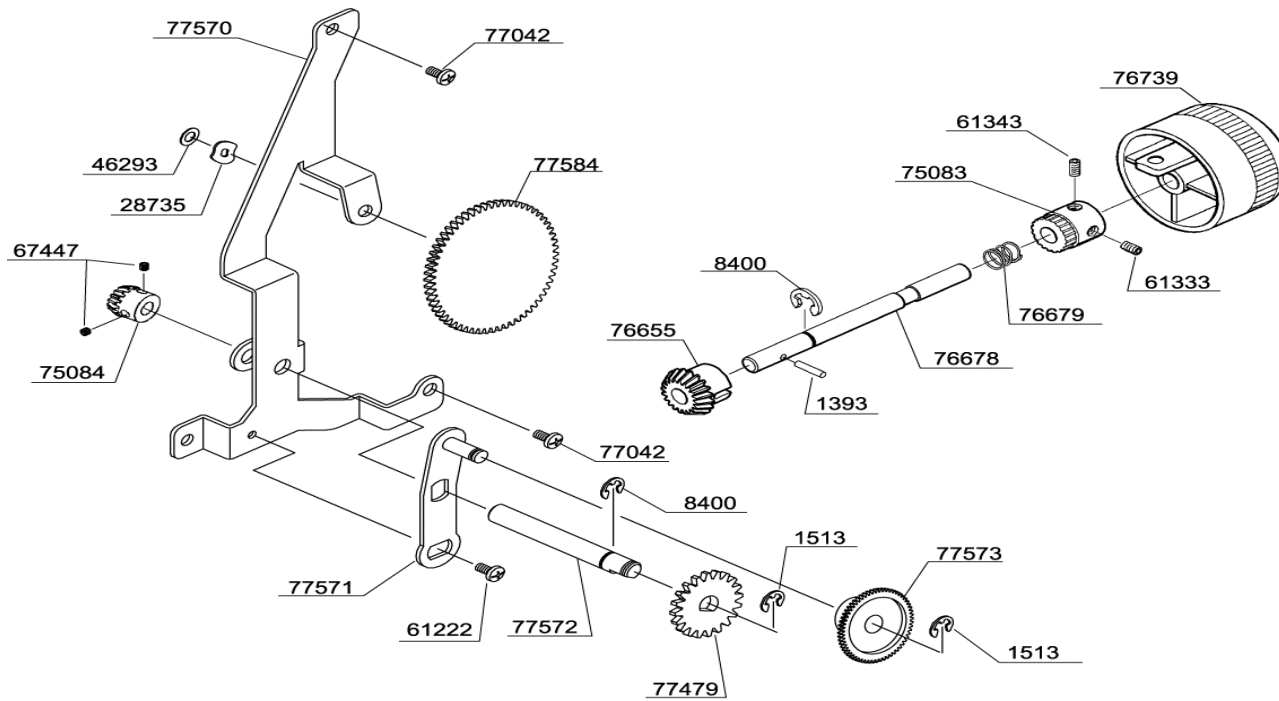
PART NO.	DESCRIPTION
1513	E4 CLIP-ON-WASHER
8400	E5 CLIP-ON-WASHER
32316	WASHER
39817	M4 PHILLIPS SCREW
61221	M4 PHILLIPS SCREW
61224	M4 PHILLIPS SCREW
66725	M4 SCREW
73299	M4 TORQUE NUT
73304	M4 SCREW
73434	M4 PHILLIPS SCREW
75087	STRETCH STITCH CONTROL LINK ASSEMBLY
75095	STITCH LENGTH CONTROL CAM
75096	FEED CONTROL LINK ASSEMBLY
75124	LEAF SPRING
75162	M4 STUD SCREW
75166	SHAFT
75173	M4 STUD SCREW
75192	TORSION SPRING
75236	PIN
76661	BH WIRE ROD
76669	REVERSE STITCH ARM
76740	STITCH LENGTH CONTROL DIAL
76784	REVERSE STITCH LEVER
77042	M4 PHILLIPS SCREW
77044	M3 PHILLIPS SCREW
77457	SHAFT
77462	CONTROL DIAL BRACKET
77585	DIAL INDICATOR
77586	SEAL



From the library of: Diamond Needle Corp



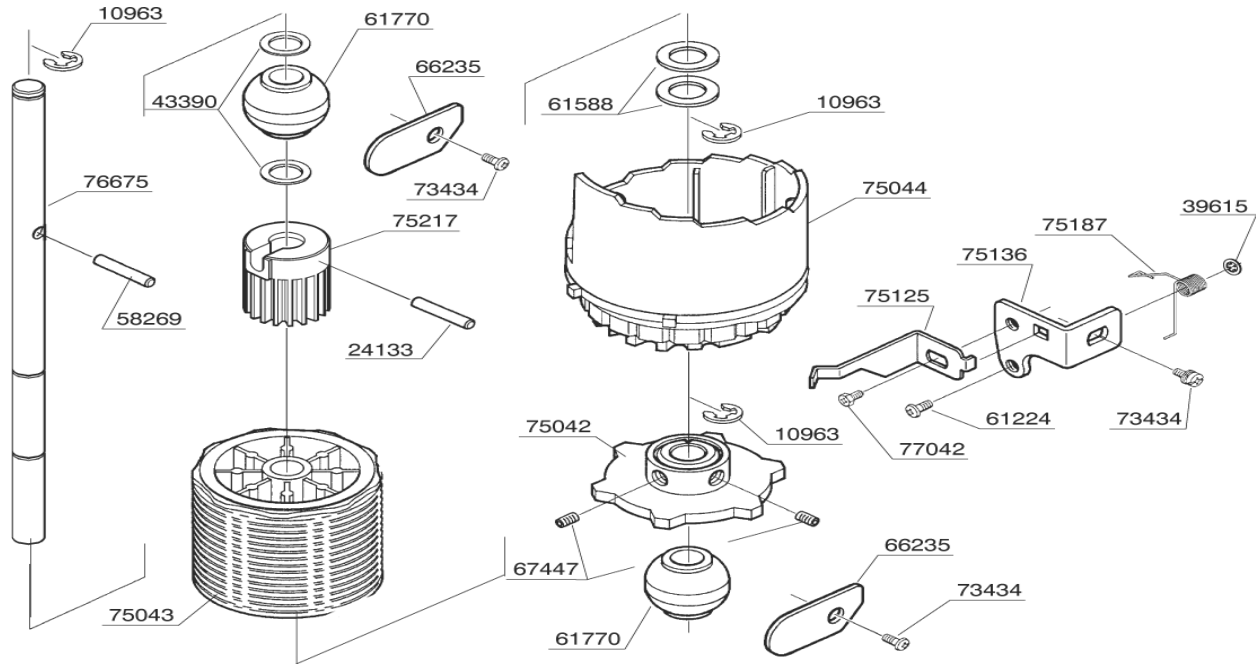
BUYER'S MODEL NO.	140Q	SECTION	PAGE	REVISION	REMARKS	PART NO.	DESCRIPTION
BUYER'S MODEL NAME		-	8			1393	SPRING PIN
FACTORY MODEL	CA32360					1513	E4 CLIP-ON-WASHER
ORIGINAL ISSUE	APRIL, 2003	SERIAL NO.				8400	E5 CLIP-ON-WASHER



1393	SPRING PIN
1513	E4 CLIP-ON-WASHER
8400	E5 CLIP-ON-WASHER
28735	CRINKLE WASHER
46293	CS-5 CLIP-ON-WASHER
61222	M4 PHILLIPS SCREW
61333	M4 SCREW
61343	M4 SCREW
67447	M5 SCREW
75083	GEAR A
75084	BEVEL GEAR
76655	BEVEL GEAR
76678	SHAFT
76679	TORSION SPRING
76739	PATTERN SELECTING DIAL
77042	M4 PHILLIPS SCREW
77479	GEAR (1)
77570	PATTERN INDICATOR BASE PLATE
77571	GEAR BRACKET
77572	COUNTER SHAFT
77573	GEAR (2)
77584	PATTERN DISK

From the library of: Diamond Needle Corp

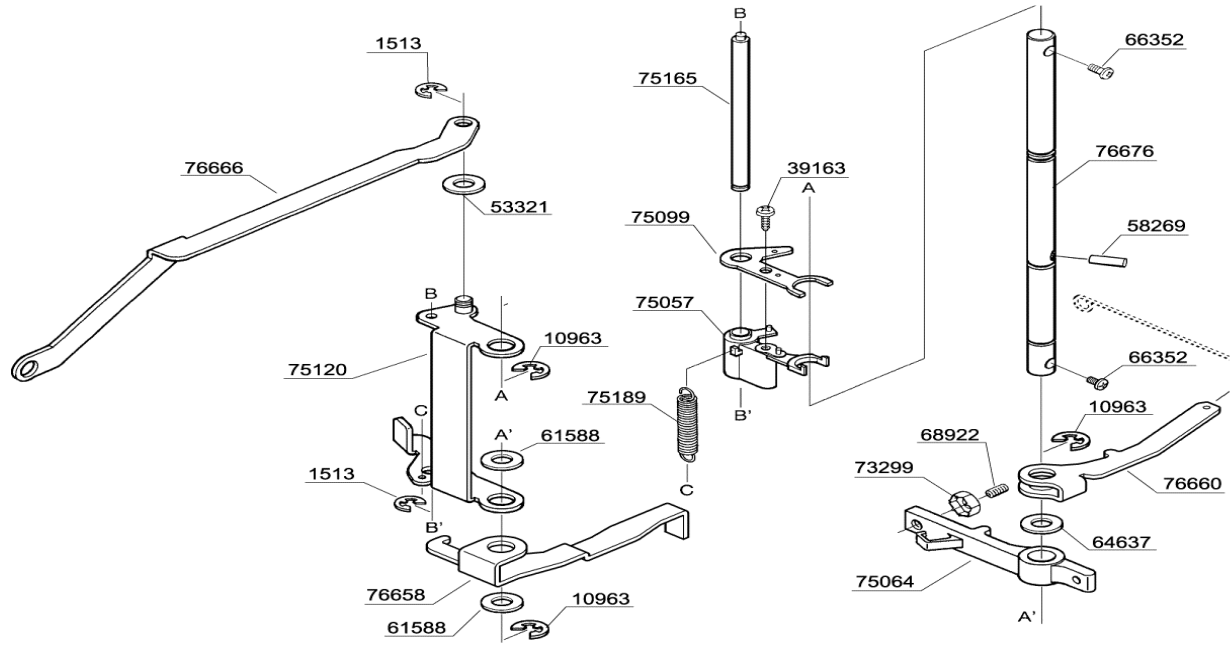
BUYER'S MODEL NO.	140Q	SECTION	PAGE	REVISION	REMARKS
BUYER'S MODEL NAME		-	9		
FACTORY MODEL	CA32360				
ORIGINAL ISSUE	APRIL, 2003		SERIAL NO.		



PART NO.	DESCRIPTION
10963	E6 CLIP-ON-WASHER
24133	SPRING PIN
39615	CLIP-ON-WASHER
43390	THRUST WASHER
58269	SPRING PIN
61224	M4 PHILLIPS SCREW
61588	WASHER
61770	BALL BUSHING
66235	SECURING PLATE
67447	M5 SCREW
73434	M4 PHILLIPS SCREW
75042	STRETCH STITCHING CAM
75043	PATTERN CAM
75044	PATTERN SELECTING CAM
75125	LEAF SPRING
75136	BRACKET
75187	TORSION SPRING
75217	WORM GEAR
76675	SHAFT
77042	M4 PHILLIPS SCREW

From the library of: Diamond Needle Corp

BUYER'S MODEL NO.	140Q	SECTION	PAGE	REVISION	REMARKS	PART NO.	DESCRIPTION
BUYER'S MODEL NAME		-	<b>10</b>			1513	E4 CLIP-ON-WASHER
FACTORY MODEL	CA32360					10963	E6 CLIP-ON-WASHER
ORIGINAL ISSUE	APRIL, 2003	SERIAL NO.				39163	TAPPING SCREW



PART NO.	DESCRIPTION
1513	E4 CLIP-ON-WASHER
10963	E6 CLIP-ON-WASHER
39163	TAPPING SCREW
53321	THRUST WASHER
58269	SPRING PIN
61588	THRUST WASHER
64637	THRUST WASHER
66352	M4 PHILLIPS SCREW
68922	M4 SCREW
73299	M4 TORQUE NUT
75057	ZIGZAG GUIDE BLOCK
75064	PATTERN SELECTING CAM CLAW
75099	PATTERN CAM FOLLOWER
75120	CAM FOLLOWER GUIDE BRACKET
75165	SHAFT B
75189	EXTENSION SPRING
76658	STRETCH STITCHING CAM FOLLOWER
76660	BH CAM FOLLOWER
76666	ZIGZAG GUIDE BAR
76676	SHAFT A

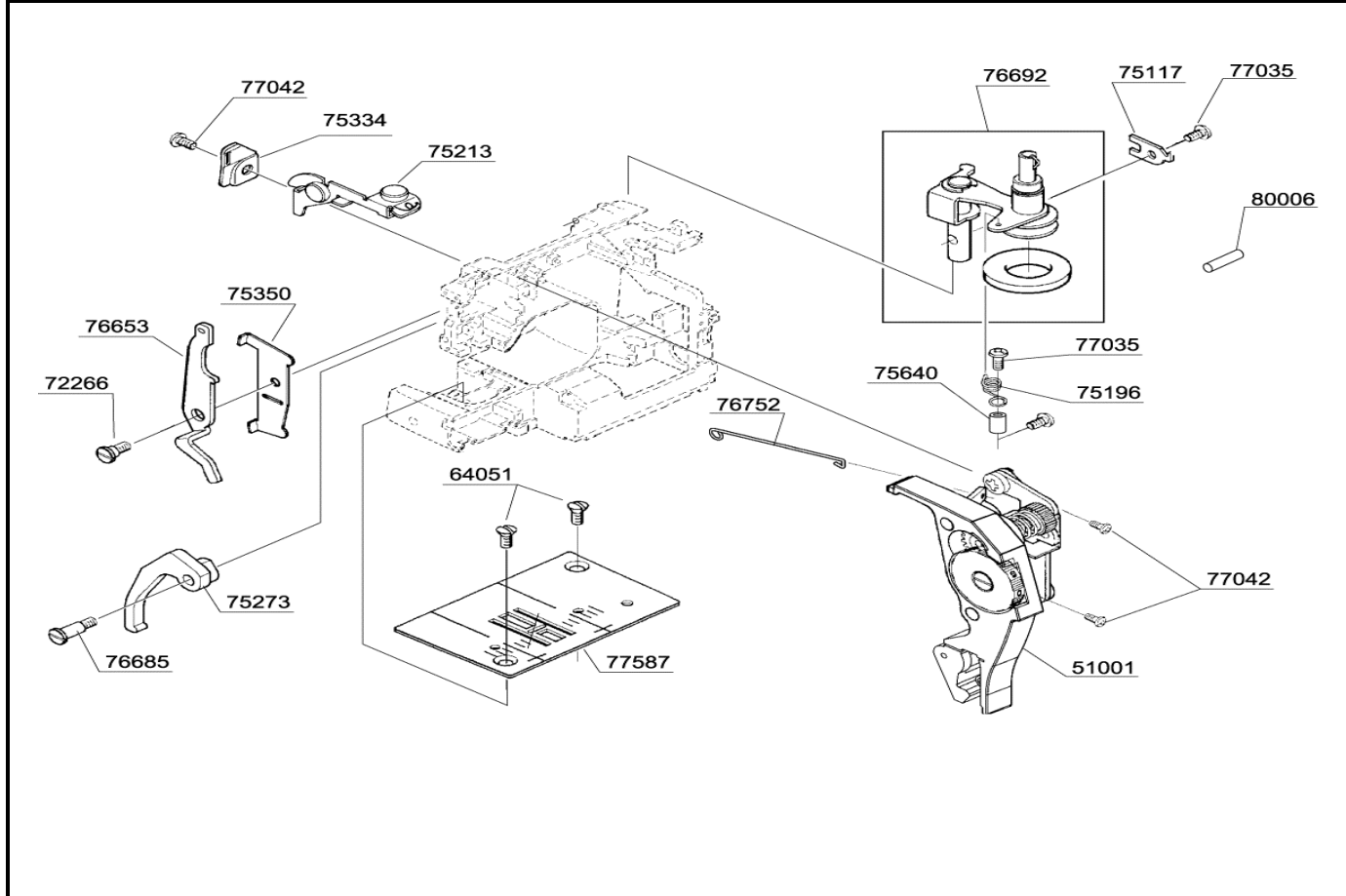
From the library of: Diamond Needle Corp

BUYER'S MODEL NO.	140Q	SECTION	PAGE	REVISION	REMARKS	PART NO.	DESCRIPTION
BUYER'S MODEL NAME		-	<b>11</b>			2744	WASHER
FACTORY MODEL	CA32360					40110	TERMINAL BLOCK ASSEMBLY
ORIGINAL ISSUE	APRIL, 2003	SERIAL NO.				40111	TERMINAL BLOCK COVER
<p>The diagram shows an exploded view of the electrical assembly. Key components include: <ul style="list-style-type: none"> <li><b>Terminal Block Assembly (40110)</b> and <b>Terminal Block Cover (40111)</b> at the top.</li> <li><b>Motor (72901)</b> at the bottom center, with a <b>Motor Pulley (75061)</b> and <b>Motor Pulley Flange (75078)</b> attached.</li> <li><b>Lamp Cord Unit (72916)</b> and <b>Light Bulb (72936)</b> on the left.</li> <li><b>Switch Assembly (59181)</b> and <b>Switch Bracket (76715)</b> on the right.</li> <li><b>Motor Belt (76703)</b> and <b>Motor Pulley Sheet (75062)</b> on the right side.</li> <li><b>Terminal Block Bracket (75137)</b> and <b>Lamp Plate Bracket (75118)</b> in the middle.</li> <li><b>Washer (68891)</b> and <b>M3 Phillips Screws (77057)</b> are also shown.</li> </ul> </p>						41892	WASHER
						44498	M3 NUT
						59181	SWITCH ASSEMBLY
						61222	M4 PHILLIPS SCREW
						61224	M4 PHILLIPS SCREW
						68891	WASHER
						72901	MOTOR
						72916	LAMP CORD UNIT
						72918	VINYL TUBE
						72936	LIGHT BULB
						75061	MOTOR PULLEY
						75062	INSULATING SHEET
						75078	MOTOR PULLEY FLANGE
						75118	LAMP PLATE BRACKET
						75137	TERMINAL BLOCK BRACKET
						75197	CORD GUIDE
						75249	HARNESS GUIDE
						75341	VINYL TUBE
						76703	MOTOR BELT
						76715	SWITCH BRACKET
77042	M4 PHILLIPS SCREW						
77057	M3 PHILLIPS SCREW						

From the library of: Diamond Needle Corp

BUYER'S MODEL NO.	140Q	SECTION	PAGE	REVISION	REMARKS
BUYER'S MODEL NAME		-	<b>12</b>		
FACTORY MODEL	CA32360				
ORIGINAL ISSUE	APRIL, 2003		SERIAL NO.		

PART NO.	DESCRIPTION
51001	THREAD GUIDE PLATE UNIT
64051	M4 SCREW
72266	M4 STUD SCREW
75117	PLATE
75196	TORSION SPRING
75213	THREAD GUIDE PLATE
75273	PRESSER FOOT LIFTER
75334	THREAD GUIDE PLATE
75350	STOPPER
75640	VINYL TUBE
76653	TENSION RELEASE LEVER
76685	M4 STUD SCREW
76692	BOBBIN WINDER COMPLETE
76752	TENSION RELEASE BAR
77035	M4 SCREW
77042	M4 PHILLIPS SCREW
77587	NEEDLE PLATE
80006	SPRING PIN



From the library of: Diamond Needle Corp

BUYER'S MODEL NO.	140Q	SECTION	PAGE	REVISION	REMARKS	PART NO.	DESCRIPTION
BUYER'S MODEL NAME		-	<b>13</b>			9122	WASHER
FACTORY MODEL	CA32360					46293	CS-5 CLIP-ON-WASHER
ORIGINAL ISSUE	APRIL, 2003	SERIAL NO.				61224	M4 PHILLIPS SCREW
						63448	WASHER
						63560	M4 PHILLIPS SCREW
						64360	TOOTHED WASHER
						68443	BLADE
						68891	WASHER
						72221	M4 STUD SCREW
						72791	M4 SCREW
						74795	TAPPING SCREW
						75127	LEAF SPRING
						75128	SECURING PLATE
						75178	PIN
						75216	REFLECTION SHEET
						75236	PIN
						76395	TAPPING SCREW
						76440	PLASTIC COLLAR
						76738	SIDE COVER
						76742	HANDLE
						76743	SHUTTLE RACE COVER
						77042	M4 PHILLIPS SCREW
						77476	INDICATOR WINDOW (1)
77576	INDICATOR WINDOW (2)						
77581	FACE COVER						
77583	CONTROL PANEL						

From the library of: Diamond Needle Corp

BUYER'S MODEL NO.	140Q	SECTION	PAGE	REVISION	REMARKS	PART NO.	DESCRIPTION
BUYER'S MODEL NAME		-	<b>14</b>			64083	SPOOL PIN
FACTORY MODEL	CA32360					65811	LARGE SCREW DRIVER
ORIGINAL ISSUE	APRIL, 2003	SERIAL NO.				67233	NEEDLE SET
						72917	FOOT CONTROL
						74793	SMALL SCREW DRIVER
						76281	BOBBIN
						76757	DUST COVER
						76837	EVEN FEED FOOT
						76838	PATCHWORK FOOT
						77040	SPOOL PIN DISC
						77046	ZIPPER FOOT
						77047	BLIND STITCH FOOT
						77049	BLIND STITCH FOOT
						77051	SATIN STITCH FOOT
						77066	QUILTING GUIDE
						85365	BUTTONHOLE OPENER / BRUSH
						86615	DARNING / EMBROIDERY FOOT

From the library of: Diamond Needle Corp